

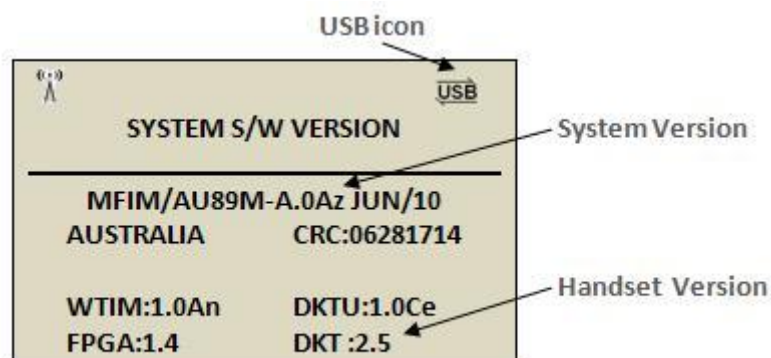
## Wireless SoHo software upgrade guide

Firmware updates will only be available for the W-SOHO base station (LWS-BS), there are two types of firmware that can be available, system and handset. These can be easily installed using the method outlined below. The base station houses both the W-SOHO system as well as a handset and each component has different firmware, this is why there may be two versions.

### How to identify LWS-BS software version

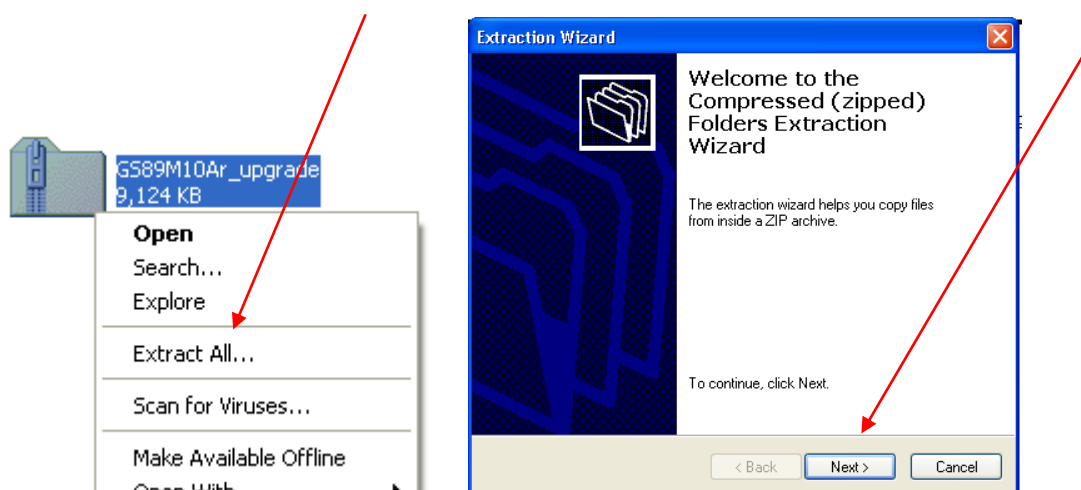
Before you apply new firmware to your W-SoHo it is best practice to take note of the software that is currently in use. This is done from the base station (LWS-BS) only.

1. From the LWS-BS press **[MENU] 4 - 4** to display firmware version information.



### How to install firmware in the LWS-BS

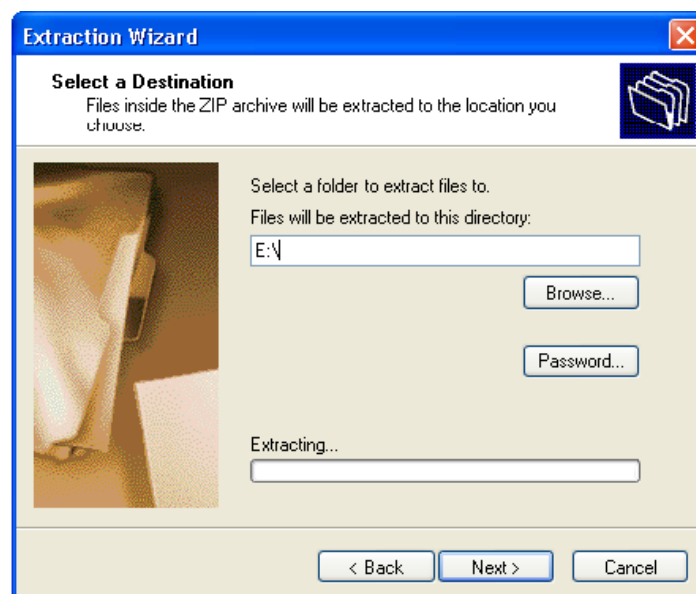
1. Download the firmware file below to your PC. To unzip the firmware download right click on the file and select 'Extract All...', this will open the Microsoft Extraction Wizard.



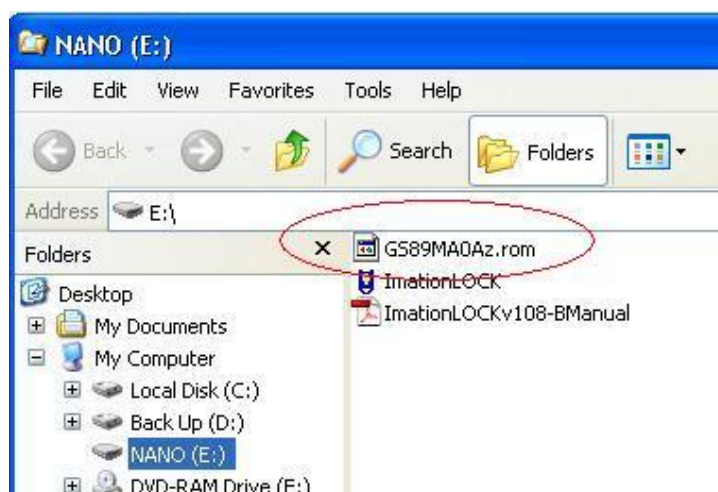
2. Click on 'Next', plug your USB memory stick into your PC and enter the location of your USB memory stick in the area under 'Files will be extracted to this directory'. My location is 'E:\ yours may be different.

# Wireless SoHo software upgrade guide

Wireless Telephone System  
**W-SOHO**



- The firmware file should now be located in the root directory of a USB memory stick. *Do not save into a folder as the LWS-BS will be unable to locate the file.*



- In the rear of the LWS-BS, located near the antenna, is a rubber stopper approximately 2cm x 2.4cm. Remove this to reveal the USB port and plug your USB memory stick in.



## Wireless SoHo software upgrade guide

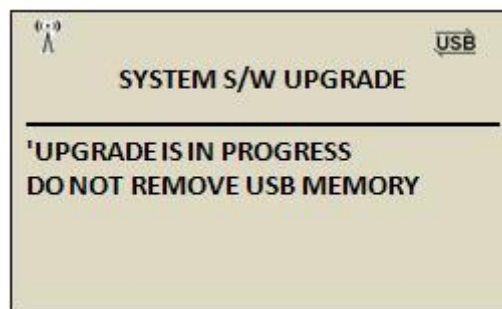
3. When the USB stick has been recognised by the LWS-BS a USB icon should appear on the top right of the LCD.

4. Press the [MENU] button followed by 4 - 5 - 1 (to load system firmware) or 4 - 5 - 2 for LWS-BS handset firmware.

5. The LWS-BS will search the USB memory device root directory for an appropriate firmware file and list the files on the LCD. Use the up and down navigation keys on the handset to select the correct file and press OK. *Normally there would only be one firmware file on the USB memory device.*

6.

a. (System) The LWS-BS will now begin the upgrade process. The LCD reads **'UPGRADE IS IN PROGRESS DO NOT REMOVE USB MEMORY'**. Once completed the handset will emit a 1 second long beep and the LCD will read 'UPGRADE SUCCESS'.



b. (Handset) The LWS-BS will now begin the upgrade process. The message **'UPGRADE IS IN PROGRESS DO NOT REMOVE USB MEMORY'** flashes on the screen followed by the screen below. Once completed the handset will automatically reset and be ready for use.



7. (System) Press the RESET soft key, the handset will re-boot and be ready for use.